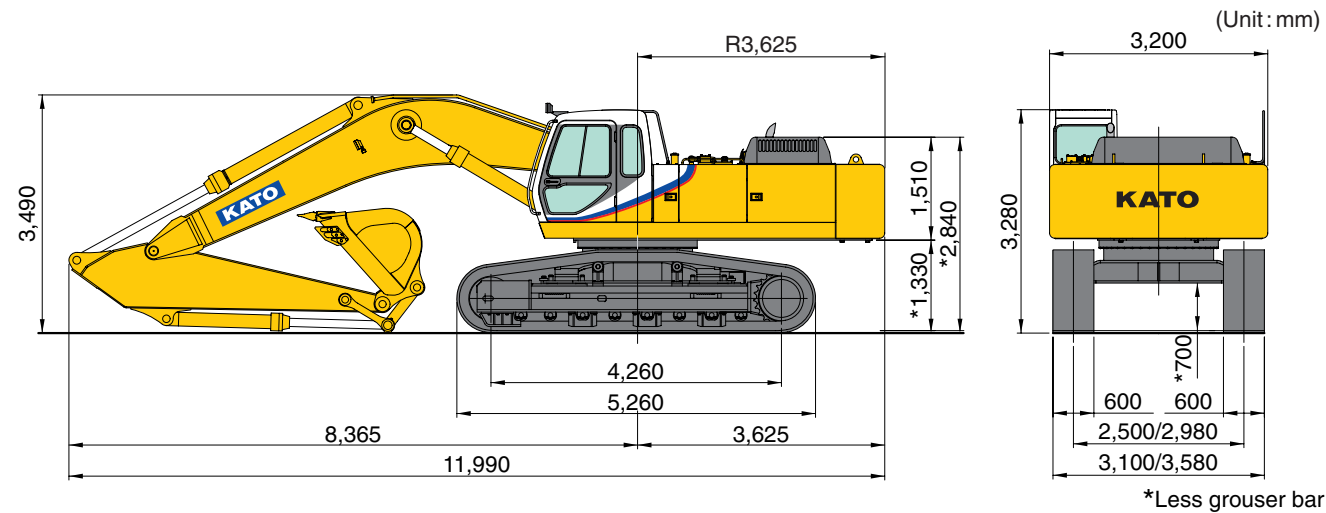


## Dimensions



**KATO**

**SUPER  
EXCEED**

**HD2045Ⅲ**

**FULLY HYDRAULIC EXCAVATOR**

Bucket capacity: 1.4m<sup>3</sup> - 2.3m<sup>3</sup> (ISO)  
 Engine output: 235kW/2,000min<sup>-1</sup> (ISO Net)  
 Operating weight: 46,200kg



NOTE : Illustrations may include optional equipment. KATO products and specifications are subject to improvements and changes without notice.

Address inquiries to :



### KATO WORKS CO.,LTD.

9-37, Higashi-ohi 1-chome, Shinagawa-ku, Tokyo 140-0011, Japan.  
 Tel. : Head Office Tokyo(03)3458-1111  
 Overseas Marketing Department Tokyo(03)3458-1115  
 Fax. : Tokyo(03)3458-1152  
 URL <http://www.kato-works.co.jp>



# Powerful Machine Harmonized with Your Demands



## High Power & Speedy Operation

Digging force Arm:

184kN (with High Power: 216kN)

Bucket: 247kN (with High Power: 276kN)

## Powerful New Engine

Max Output: 235kW/2,000min<sup>-1</sup>(ISO Net)

Max Torque: 1,245N·m/1,200min<sup>-1</sup>(ISO Net)

Comply with the latest emission control

## Durable Structure

Heavy duty reinforced front structure offers steady & durable operations

All around 360° well balanced operation with expandable square shape lower undercarriage

## High efficiency Cooling System

High performance radiator and aluminum oil cooler with easier access for cleaning to keep radiators fresh always

## Fatigue Free & Comfortable Cabin

Auto air conditioner

UV-cut glass

Mono piece big & wide side window

Wide range adjustable seating position

Anti-static-electricity fabric seat

## Easier Maintenances and More



# Technical Specifications

## ENGINE

Model	Mitsubishi 6D24-TLE2A, 4 cycle intercooler turbo charged diesel engine
Number of cylinders	6
Bore & Stroke	130mm x 150mm
Total displacement	11.94 L
Rated output	235kW/2,000min <sup>-1</sup> (ISO Net)
Max. torque	1,245N·m/1,200min <sup>-1</sup> (ISO Net)
Compression ratio	17.5:1
Combustion system	Direct injection
Specific fuel consumption	221g/kW-hour
Cooling system	Pressurized water circulated by a centrifugal pump with thermostat
Lubrication system	Pressurized oil fed by a gear pump through full-flow and by-pass cartridge filter
Starter	Electric, 24V-7.0kW
Generator	Alternator, 24V-50A
Governor	Electric
Air cleaner	Dry type filter

## HYDRAULIC SYSTEM

Pumps	Double variable piston pump and gear pump
Max. discharge flow	2 x 370L/min
Max. discharge pressure	24.9MPa
Max. discharge pressure (travel circuit only)	30.9MPa
Oil filtration	Full-flow filter with replaceable element, a drain cartridge filter, a pilot line filter and a suction strainer
Control valve	5 + 5 section multiple control valve (with one free service circuit)
Pilot pump	Gear type
Oil cooler	Finned tube, forced ventilation
Pressure relief valves	Primary and secondary on each circuit

## CAB & CONTROLS

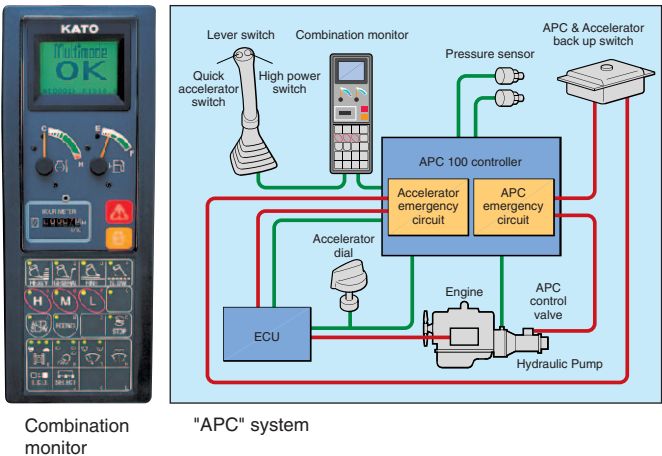
Type	All weather sound suppressed, 1,000mm wide pressed steel cab mounted on 6 point viscous mounting.
Right hand lever	Controls the boom & bucket
Inner right hand lever (with foot pedal)	Controls the right hand track
Inner left hand lever (with foot pedal)	Controls the left hand track
Left hand lever	Controls the arm & swing
Pilot control	Travel, boom, arm, bucket and swing
Engine throttle	Electric "Accel dial"
Meter & gauges	Hour meter, water temperature and fuel level
Monitor display	Engine oil pressure, engine oil filter, hydraulic oil filter, hydraulic oil temperature, water temperature, water level, fuel level, battery charge, APC monitor and air cleaner.
Indicator lamps	Caution lamp & Engine preheater indicator lamp & Engine diagnosis lamp
Working lights	Provided on the boom left side and mounted on the frame
Lubrication chart	Inside the tool box

## SWING SYSTEM

Drive	Two axial piston motors with reduction gear.
Brake	A hydraulic brake that locks automatically when the swing control lever is in the neutral position and a mechanical parking brake which is applied when the safety lock lever is pulled backwards, the engine is turned off or the swing control lever is in the neutral position.
Lubrication	Completely housed and grease bathed
Max. swing speed	9.1min <sup>-1</sup>
Tail swing radius	3,625mm
Min. front swing radius	4,860mm

## BOOM, ARM AND BUCKET

Boom cylinders	Two, double acting
Bore & Stroke	180mm x 1,683mm
Arm cylinder	One, double acting
Bore & Stroke	190mm x 1,990mm
Bucket cylinder	One, double acting
Bore & Stroke	170mm x 1,278mm
Lubrication	Grease nipples, with centralized greasing for remote points
Bucket digging force	247kN
(High power)	276kN
Arm digging force	184kN
(High power)	216kN
(High power can be used with STD arm and short arm)	



## SERVICE DATA

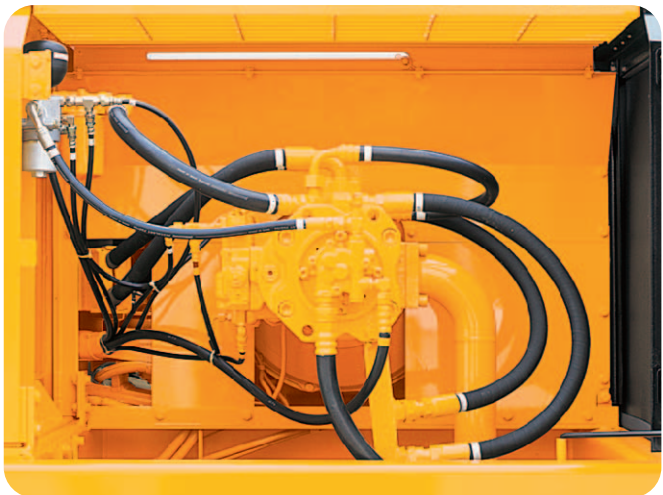
Fuel tank	605 L
Cooling system	49 L
Engine oil	49 L
Track drives	2 x 21 L
Swing drive	2 x 11.3 L
Hydraulic oil tank (level)	329 L
(system)	610 L
In standard figure, with the 3.45m arm, 600mm grouser shoes and 2.0m <sup>3</sup> (ISO) bucket.	
Operating weight	46,200kg
Ground pressure	82kPa

## TRAVEL SYSTEM

Drive	Independent axial piston motor with reduction for each side
Brakes	Independent disk parking brake for each side, applied automatically when the travel levers are in the neutral position.
Track shoes	51 each side
Track adjustment	Grease cylinders with recoil springs with floating seals
Lubrication	Sealed-for-life rollers and front idlers
Travel speed	High 0 ~ 5.0km/h Medium 0 ~ 3.0km/h Low 0 ~ 2.2km/h
Gradeability	70% (35°)
Max. drawbar pull	392kN
Ground clearance (less grouser bar)	700mm
Track length	5,260mm

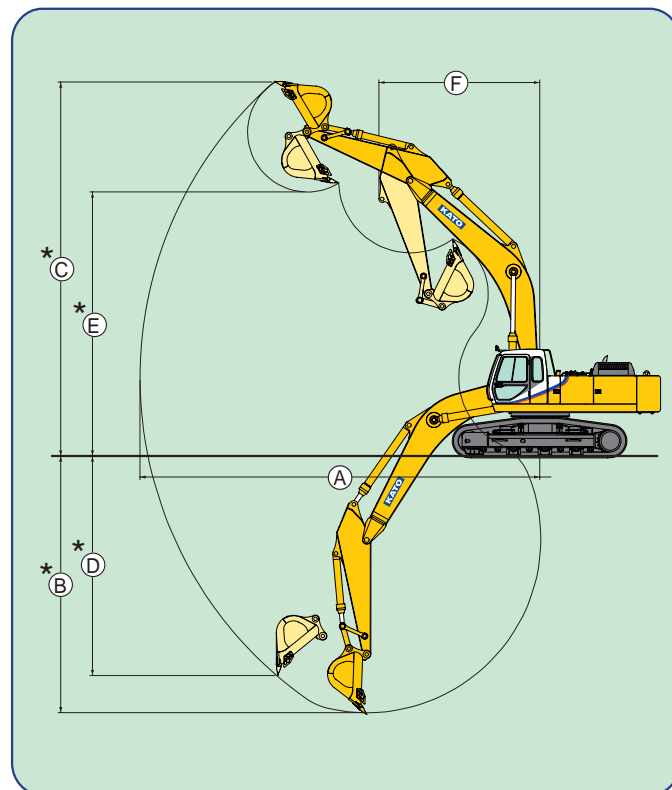


Option specification



Fire wall

## Working Ranges



(Unit : mm)

Range	Arm	Short Arm (2.95m)	STD Arm (3.45m)	Long Arm (4.95m)
(A)-Max. digging radius		11,640	12,080	13,430
(B)-Max. digging depth		7,260	7,760	9,250
(C)-Max. digging height		11,080	11,300	11,800
(D)-Max. vertical wall		5,880	6,630	8,120
(E)-Max. dumping height		7,800	7,970	8,480
(F)-Min. swing radius		5,050	4,860	4,840

\*Less grouser bar.

## Bucket

Type of bucket		Backhoe bucket					Skeleton bucket	Rock bucket	Ripper
Bucket capacity m³, ISO		1.4	1.6	1.8	2.0	2.3	-	1.2	-
Bucket width	w/o side cutters, mm	1,180	1,310	1,440	1,550	1,770	1,670	1,070	-
	with side cutters, mm	1,290	1,420	1,550	1,660	1,880	-	1,200	-
Bucket weight kg		1,400	1,510	1,605	1,780	1,790	1,930	1,870	1,290
Number of bucket teeth		4	5	5	5	5	5	5	1
Shape of bucket									
Standard boom +	Short arm								
	Standard arm								
	Long arm			x	x	x	x	x	x

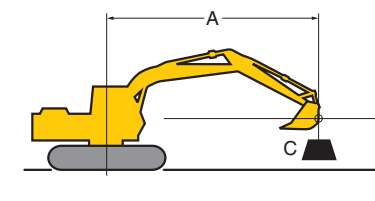
General purpose    Light work    Rock digging    Loading    Usable    x    Unusable    \*Usable only when 700mm shoe is fitted on.  
Yellow colored area means standard.

## Track Shoes

Type of shoes		Grouser shoe				
Shoe width mm		600	700	760	800	910
Overall width mm	Extended	3,580	3,680	3,740	3,780	3,890
	Retracted	3,200	3,200	3,260	3,300	3,410
Ground pressure kPa		82	71	66	63	56
Net weight change kg		S.T.D	+500	+1,100	+1,300	+1,900

Yellow colored area means standard.

## Lifting Capacities



A : REACH FROM SWING CENTERLINE  
B : BUCKET HOOK HEIGHT  
C : LIFTING CAPACITIES

: OVER FRONT

: OVER SIDE OR 360°

HD2045III 600mm Shoe, 7.00m Boom, 3.45m Arm, 2.0m³ Bucket (1,780kg)

Unit: 1,000kg

LIFT POINT HEIGHT B (m)	LIFT POINT RADIUS A (m)																AT MAXIMUM LIFT POINT RADIUS		
																			m
8.00																			
7.00																			
6.00																			
5.00																			
4.00																			
3.00																			
2.00																			
1.00																			
0.00																			
-1.00																			
-2.00																			
-3.00																			
-4.00																			
-5.00																			
-6.00																			

NOTE : 1. Lifting capacities are based on ISO 10567.  
2. Lifting capacities shown do not exceed 87% of machine hydraulic capacity or 75% of minimum tipping load.  
3. Capacities marked with an asterisk (\*) are limited by hydraulic capacities.  
4. Lifting capacities are based on machine standing on firm, uniform supporting surface.  
User must make allowances for job conditions such as soft or uneven ground.  
5. Lifting capacities shown should not be exceeded. Weight of all lifting accessories must be deducted from the above lifting capacities.  
6. Capacities apply only to the machine as originally manufactured and equipped by KATO WORKS CO., LTD.  
7. The operator should be fully acquainted with the operation manual before operating the machine.

## Standard Equipment

New APC mode  
New auto-slow • One-touch-slow  
Multi-mode display monitor  
Adjustable monitor alarm  
2 service hour meter  
3 traveling mode  
Automatic travel speed change  
Spring assisted pull-up front window  
6 points viscous damping cab suspension  
Multi position operator's seat  
Adjustable seat suspension  
Adjustable speed window wiper  
Front window washer (2 sprays)  
Rear emergency escape window  
Cabin light connected to cabin door  
2 working lights  
(Upper front right side & Boom left side)  
Main control valve with antidrft valves (Boom and Arm)  
Digging force booster (High power)  
Swing shockless valve  
Automatic swing parking brake  
Automatic travel parking brake  
One free service circuit for attachments  
Fire wall  
Rear view mirror (right side)  
Track guard, 3 pcs each side  
Air cleaner, double element

## Optional Equipment

Tinted transparent hatch  
Seat belt  
Automatic climate control air conditioner  
Hot & cool box contained with AC  
Auto tuning AM/FM radio with clock  
2 speaker stereo  
Working light (Cab left side)  
Working light (Boom right side)  
Working light (Cab right side)  
Rear view mirror (left side)  
Cab access step  
Optional piping  
Cab front half guard  
Cab front full guard  
Cab head guard  
Electronic horn  
Cabin fan  
Swing warning light  
Travel alarm  
Refueling pump  
Low temperature spec  
Tool set  
Full-length track guard  
Electric lubricator